

Lamp Current (A): 2.1A
 Ignitor Voltage (Min.): 0.6KV
 Luminaire Rating: Enclosed
 Burning Position: Base Up $\pm 15^\circ$

HIE 250W/BU/EURO/4K
Product Number: 81203

Lamp Type: Euro Metal Halide

Performance Data

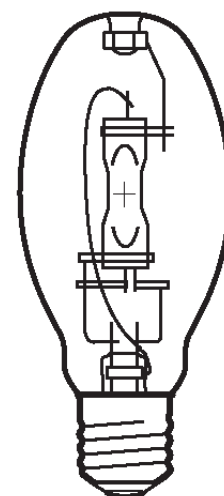
Light Output (Lumens @ 100 hours)	23000
Lamp Lumens Per Watt	92
Rated Life (Hrs. @ 10 Hr. /Start)	10000
Correlated Colour Temperature (K)	4000
Chromaticity (CIE - X Y)	385, 390
Colour Rendering Index (CRI) or (Ra)	68
Typical Warm Up Time (Minutes)	2-4
Typical Hot Restart Time (Minutes)	5-10
Burning Position	Base Up $\pm 15^\circ$

Physical Data / Requirements

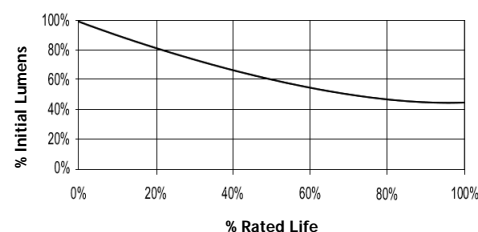
Base Designation	E40
Bulb Designation	E90
Bulb Diameter (mm)	90
Max. Overall Length (mm)	215
Light Centre Length (mm)	131
Effective Arc Length (mm)	24.2
Max. Base Temperature (°C)	250
Max. Bulb Temperature (°C)	400
Luminaire Type	Enclosed
Socket Pulse Rating (KV)	4
Mercury Content (mg)	

Lamp Electrical Data / Requirements

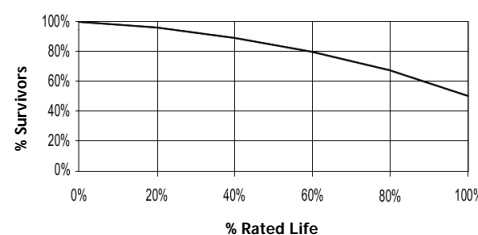
IEC Standard	-
Lamp Wattage (W)	250
Lamp Operating Voltage (V)	133
Lamp Operating Current (Amps)	2.1
Min. Open Circuit Voltage (RMS)	198
Min. Starting Pulse (Peak V)	600
Min. Pulse Width at 540V (microseconds)	260
Min. Pulse Rate Per ½ cycle	1
Pulse Position (Electrical Degrees)	60-90



Lumen Maintenance



Lamp Mortality



Revision: 28/02/2006

Notes:

This Product Specification contains data about typical performance at nominal power. Actual values may depend on ballast and applications. Complies with (CE), Low Voltage (CE), WEEE and RoHS Directives.

This lamp is also compatible with a 3.0-4.5kV ignitor