

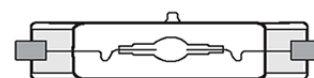
Lamp Current (A): 0.9A
 Ignitor Voltage: 1.8-4.5KV
 Luminaire Rating: Enclosed
 Burning Position: Horizontal±45°

MH-DE 70W/UVS/3K
Product Number: 16786

Lamp Type: Double Ended Rx7s

Performance Data

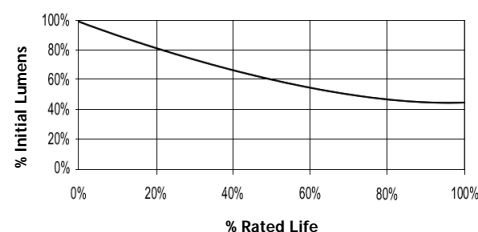
Light Output (Lumens @ 100 hours)	5200
Lamp Lumens Per Watt	69
Rated Life (Hrs. @ 10 Hr. /Start)	10000
Correlated Colour Temperature (K)	3000
Chromaticity (CIE - X Y)	435, 400
Colour Rendering Index (CRI) or (Ra)	70
Typical Warm Up Time (Minutes)	1-2
Typical Hot Restart Time (Minutes)	2-4
Burning Position	Horizontal±45°



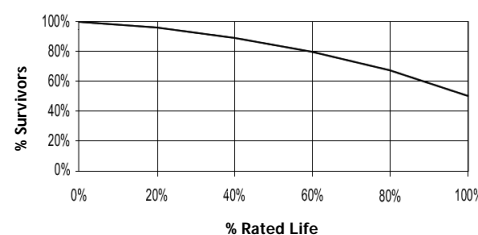
Physical Data / Requirements

Base Designation	Rx7s
Bulb Designation	T20
Bulb Diameter (mm)	20
Insertion Length (mm)	117.6
Contact to Contact Length (mm)	114.2
Effective Arc Length (mm)	8.6
Max. Base Temperature (°C)	280
Max. Bulb Temperature (°C)	500
Luminaire Type	Enclosed
Socket Pulse Rating (KV)	6
Mercury Content (mg)	

Lumen Maintenance



Lamp Mortality



Lamp Electrical Data / Requirements

IEC Standard	61167
Lamp Wattage (W)	75
Lamp Operating Voltage (V)	95
Lamp Operating Current (Amps)	0.9
Min. Open Circuit Voltage (RMS)	198
Min. - Max. Starting Pulse (Peak V)	1800-4500
Min. Pulse Width at 3200V (microseconds)	1
Min. Pulse Rate Per ½ cycle	1
Pulse Position (Electrical Degrees)	60-90, 240-270

Revision: 22.03.2011

Notes:

This Product Specification contains data about typical performance at nominal power. Actual values may depend on ballast and applications. Complies with (CE), Low Voltage (CE), WEEE and RoHS Directives.