

### HIE 250W/V/PS/740

### Product Number: 18980

**Lamp Type:** Uni-Form Pulse Start

#### Performance Data

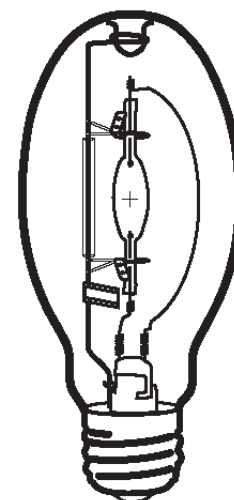
Light Output (Lumens @ 100 hours)	25000
Lamp Lumens Per Watt	100
Rated Life (Hrs. @ 10 Hr. /Start)	20000
Correlated Colour Temperature (K)	4000
Chromaticity (CIE - X Y)	385, 390
Colour Rendering Index (CRI) or (Ra)	68
Typical Warm Up Time (Minutes)	2-3
Typical Hot Restart Time (Minutes)	3-5
Burning Position	Vertical±15°

#### Physical Data / Requirements

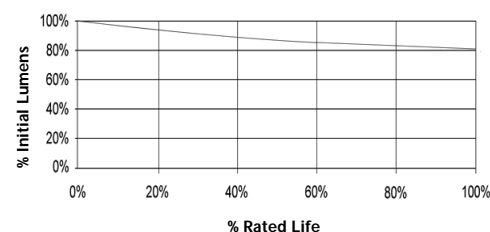
Base Designation	E40
Bulb Designation	E90
Bulb Diameter (mm)	90
Max. Overall Length (mm)	215
Light Centre Length (mm)	131
Effective Arc Length (mm)	N/A
Max. Base Temperature (°C)	250
Max. Bulb Temperature (°C)	400
Luminaire Type	Enclosed
Socket Pulse Rating (KV)	4.5
Mercury Content (mg)	

#### Lamp Electrical Data / Requirements

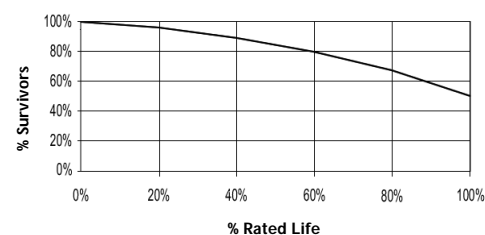
IEC Standard	-
Lamp Wattage (W)	250
Lamp Operating Voltage (V)	133
Lamp Operating Current (Amps)	2.1
Min. Open Circuit Voltage (RMS)	198
Min. - Max. Starting Pulse (Peak V)	3000-4500
Min. Pulse Width at 2700V (microseconds)	1
Min. Pulse Rate Per ½ cycle	1
Pulse Position (Electrical Degrees)	60-90, 240-270



**Lumen Maintenance**



**Lamp Mortality**



**Revision:** 11.03.2011

#### Notes:

This Product Specification contains data about typical performance at nominal power. Actual values may depend on ballast and applications. Complies with (CE), Low Voltage (CE), WEEE and RoHS Directives.

Rated Life is based on operation with Ventronic® or specifically approved electronic ballasts.

Minimum Operating Temperature: -40°C