

Lamp Type: Uni-Form Pulse Start

Performance Data

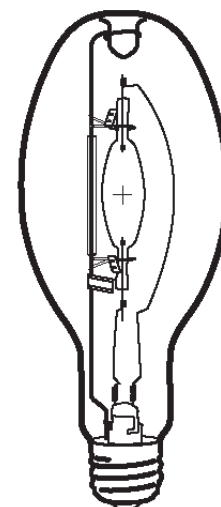
| | |
|--------------------------------------|----------------|
| Light Output (Lumens @ 100 hours) | 40000 |
| Lamp Lumens Per Watt | 95 |
| Rated Life (Hrs. @ 10 Hr. /Start) | 30000 |
| Correlated Colour Temperature (K) | 3700 |
| Chromaticity (CIE - X Y) | 395, 390 |
| Colour Rendering Index (CRI) or (Ra) | 70 |
| Typical Warm Up Time (Minutes) | 2-3 |
| Typical Hot Restart Time (Minutes) | 4-6 |
| Burning Position | Horizontal±75° |

Physical Data / Requirements

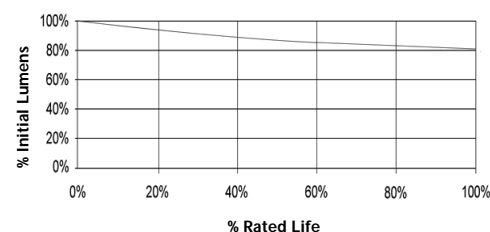
| | |
|----------------------------|----------|
| Base Designation | E40 |
| Bulb Designation | E120 |
| Bulb Diameter (mm) | 120 |
| Max. Overall Length (mm) | 296 |
| Light Centre Length (mm) | 182 |
| Effective Arc Length (mm) | N/A |
| Max. Base Temperature (°C) | 250 |
| Max. Bulb Temperature (°C) | 400 |
| Luminaire Type | Enclosed |
| Socket Pulse Rating (KV) | 4.5 |
| Mercury Content (mg) | |

Lamp Electrical Data / Requirements

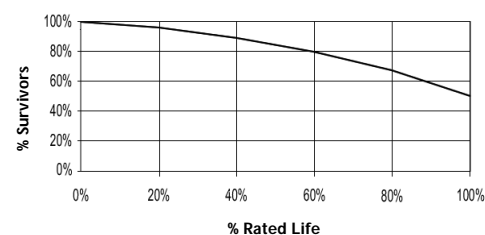
| | |
|--|----------------|
| IEC Standard | - |
| Lamp Wattage (W) | 400 |
| Lamp Operating Voltage (V) | 135 |
| Lamp Operating Current (Amps) | 3.2 |
| Min. Open Circuit Voltage (RMS) | 198 |
| Min. - Max. Starting Pulse (Peak V) | 3000-4500 |
| Min. Pulse Width at 2700V (microseconds) | 1 |
| Min. Pulse Rate Per ½ cycle | 1 |
| Pulse Position (Electrical Degrees) | 60-90, 240-270 |



Lumen Maintenance



Lamp Mortality



Revision: 11.03.2011

Notes:

This Product Specification contains data about typical performance at nominal power. Actual values may depend on ballast and applications. Complies with (CE), Low Voltage (CE), WEEE and RoHS Directives.

Rated Life is based on operation with Ventronic® or specifically approved electronic ballasts.

Minimum Operating Temperature: -40°C