

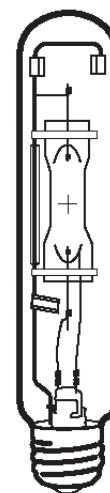
Lamp Current (A): 3.2A
 Ignitor Voltage (Min.): 0.6KV
 Luminaire Rating: Enclosed
 Burning Position: Universal

HIT 400W/U/EURO/4K
Product Number: 25830

Lamp Type: Euro Metal Halide

Performance Data

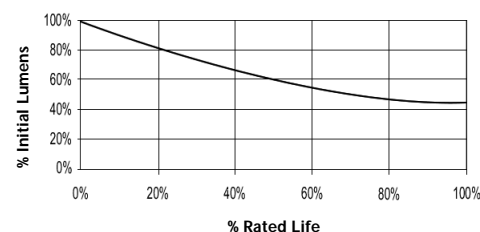
Light Output (Lumens @ 100 hours)	36000V / 32400H
Lamp Lumens Per Watt	90
Rated Life (Hrs. @ 10 Hr. /Start)	15000V / 11250H
Correlated Colour Temperature (K)	4000
Chromaticity (CIE - X Y)	385, 390
Colour Rendering Index (CRI) or (Ra)	68
Typical Warm Up Time (Minutes)	3-5
Typical Hot Restart Time (Minutes)	10-15
Burning Position	Universal



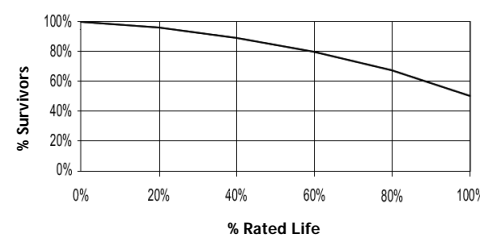
Physical Data / Requirements

Base Designation	E40
Bulb Designation	T46
Bulb Diameter (mm)	46
Max. Overall Length (mm)	285
Light Centre Length (mm)	175
Effective Arc Length (mm)	35.4
Max. Base Temperature (°C)	250
Max. Bulb Temperature (°C)	500
Luminaire Type	Enclosed
Socket Pulse Rating (KV)	4
Mercury Content (mg)	

Lumen Maintenance



Lamp Mortality



Lamp Electrical Data / Requirements

IEC Standard	-
Lamp Wattage (W)	400
Lamp Operating Voltage (V)	135
Lamp Operating Current (Amps)	3.2
Min. Open Circuit Voltage (RMS)	198
Min. Starting Pulse (Peak V)	600
Min. Pulse Width at 540V (microseconds)	1
Min. Pulse Rate Per ½ cycle	1
Pulse Position (Electrical Degrees)	60-90, 240-270

Revision: 28/02/2006

Notes:

This Product Specification contains data about typical performance at nominal power. Actual values may depend on ballast and applications. Complies with (CE), Low Voltage (CE), WEEE and RoHS Directives.

This lamp is also compatible with a 3.0-4.5kV ignitor