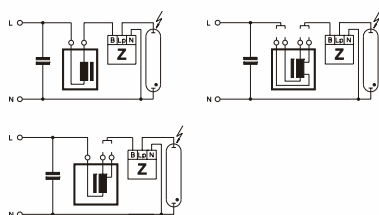
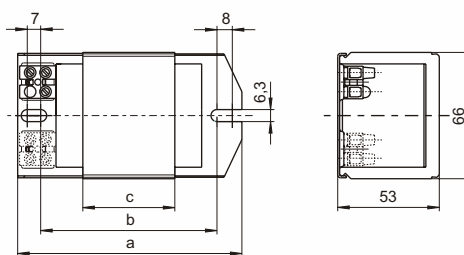


new>>

Ballasts with Thermal Cut-out for HS and HI Lamps 35 to 250 W

Shape: 53x66 mm

For high pressure sodium lamps (HS), metal halide lamps (HI) and ceramic discharge lamps (C-HI)
 Vacuum-impregnated with polyester resin
 With VS-patented, intelligent temperature switch with an automatic reset (monitors ballast temperature and current)
 Screw terminals: 0.5–2.5 mm²
 Protection class I
 tw 130



Lamp			Ballast									Capacitor	
Output	Type	Current	Type	Ref. No.	Voltage AC	a	b	c	Weight	Δt	Power factor	C _P	I _N
W		A			V, Hz	mm	mm	mm	kg	K	λ	μF	A
35	HS, HI	0.53	NaHJ 35.485	503010	230/240, 50	108	86	28	0.91	60	0.40	6	0.22/0.21
50	HS	0.76	NaHJ 70/50.695	507697	230/240, 50	108	86	48	1.39	50	0.37	8	0.30/0.29
70	HS, HI	1.00			70					70	0.37	12	0.38/0.37
new>>	70	HS, HI	NaHJ 70.128	535191	230, 50	108	86	36	1.07	70	0.36	12	0.38
	70	HS, HI	NaHJ 70.158	169722	230/240, 50	108	86	42	1.23	70	0.36	12	0.38/0.37
	70	HS, HI	NaHJ 100/70.703	504131	230, 50	117	92	55	1.55	60	0.37	12	0.38
	100	HS, HI			70					70	0.43	12	0.55
	100	HS, HI	NaHJ 100.941	502799	230/240, 50	108	86	42	1.23	75/80	0.42	12	0.55/0.53
	100	HS, HI	NaHJ 150/100.973	504135	230, 50	145	120	75	2.10	55	0.41	12	0.55
	150	HS, HI			75					75	0.41	20	0.77
new>>	150	HS, HI	NaHJ 150.620	535216	230, 50	145	120	64	1.80	70	0.40	20	0.77
	150	HS, HI	NaHJ 150.995	169721	230/240, 50	145	120	75	2.10	70	0.40	20	0.77/0.74
	250	HS, HI	NaHJ 250.915	505054	230, 50	180	155	110	2.84	80	0.40	32	1.26
	250	HS, HI	NaHJ 250.340	508723	240, 50	180	155	110	2.84	80	0.39	32	1.26