



Meaningful Innovation.

WEEE Number: 80133970

INSTRUCTION MANUAL

LED WATERPROOF BATTEN LIGHT



IP65
RATING

IK 10
RATING

05 YEAR
WARRANTY*

TECHNICAL DATA

MODEL	VT-41004	VT-41004S	VT-41005	VT-41005S	VT-41006	VT-41006S
SKU	23071	23072	23075	23076	23079	23080
WATTS	20W / 25W / 30W		30W / 40W / 50W		40W / 50W / 60W	
COLOR TEMPERATURE	4000K / 5000K / 6500K					
DEFAULT SETTING	25W & 5000K		40W & 5000K		50W & 5000K	
INPUT VOLTAGE	AC 220-240V, 50Hz					
LUMENS	4200 LM		7000 LM		8400 LM	
SIZE (mm)	1200 x 80 x 72		1500 x 80 x 72		1800 x 80 x 72	
MICROWAVE SENSOR	NO	YES	NO	YES	NO	YES
EMERGENCY BATTERY BAKUP	NO					
BEAM ANGLE	120°		120°		120°	
CRI	>80		>80		>80	
LIFE SPAN [HOURS]	50,000		50,000		50,000	
BODY TYPE	PC		PC		PC	

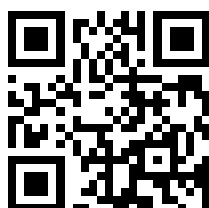
SENSOR SPECIFICATION

OPERATING VOLTAGE	MICROWAVE FREQUENCY	MICROWAVE POWER	OPERATING CURRENT	CONTROL MODE	STAND-BY DIMMING LEVEL	STAND BY PERIOD	HOLD TIME	DAYLIGHT THRESHOLD	DETECTION RANGE	DETECTION ANGLE
DC 7.5-12V	5.8 GHz +75Mhz	<0.3mW	<30mA	PWM	0% / 20%	15min/+∞	5s/1min/ 3min/10min	30Lux/ Disable	Ø24M (Max)	Side Wall <150° Ceiling Mount 360°

REMOTE CONTROL

ONLY BE COMPATIBLE WITH MODELS THAT HAVE SENSOR

BATTERY	DETECTION AREA	STAND-BY DIMMING LEVEL	STAND-BY PERIOD	HOLD TIME	DAYLIGHT THRESHOLD	BRIGHTNESS ADJUST
2xAAA (Not included)	50% / 100%	0% / 10% / 20% / 30%	5min / 15min / 30min / + ∞	30s / 1min 3min / 10min	10Lux / 30Lux / 50Lux / Disable	-/+ Button on Remote



MULTI-LANGUAGE MANUAL QR CODE

Please scan the QR code to access the manual in multiple languages.

INTRODUCTION & WARRANTY

Thank you for selecting and buying V-TAC product. V-TAC will serve you the best. Please read these instructions carefully before starting the installation and keep this manual handy for future reference. If you have any another query, please contact our dealer or local vendor from whom you have purchased the product. They are trained and ready to serve you at the best. The warranty is valid for 3 years from the date of purchase. The warranty does not apply to damage caused by incorrect installation or abnormal wear and tear. The company gives no warranty against damage to any surface due to incorrect removal and installation of the product. The products are suitable for 10-12 Hours Daily operation. Usage of product for 24 Hours a day would void the warranty. This product is warranted for manufacturing defects only.



This marking indicates that this product should not be disposed of with other household wastes.



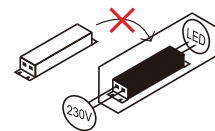
Caution, risk of electric shock.

WARNING

1. Please make sure to turn off the power before starting the installation.
2. Installation must be performed by a qualified electrician
3. The light source of this luminaire is not replaceable, when the light source reaches its end of life the whole luminaire should be replaced.
4. If the external flexible cable or cord of this luminaire is damaged, it shall be exclusively replaced by the manufacturer or his service agent or a similar qualified person in order to avoid a hazard.
5. Proper grounding should be ensured throughout the installation.
6. Please do not install on a surface that is prone to vibrations.
7. Contact our customer support team for battery replacement.



Non-replaceable light source



Non-replaceable control gear

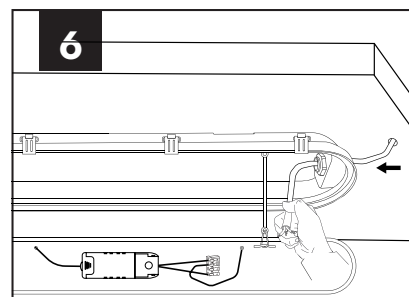
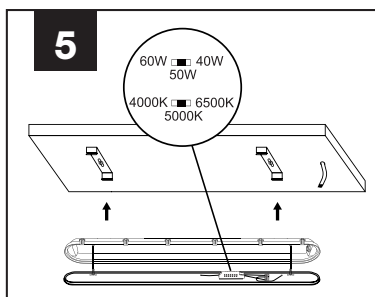
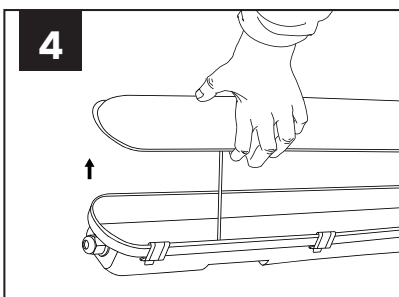
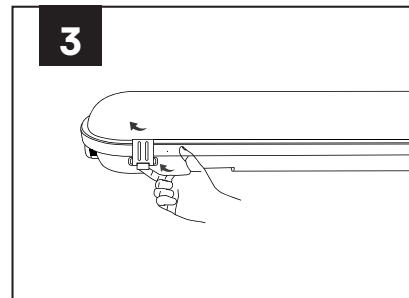
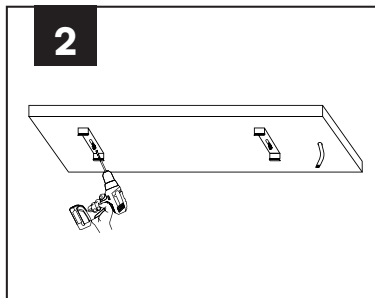
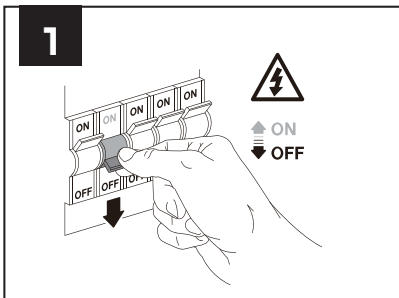
INSTALLATION PRECAUTIONS

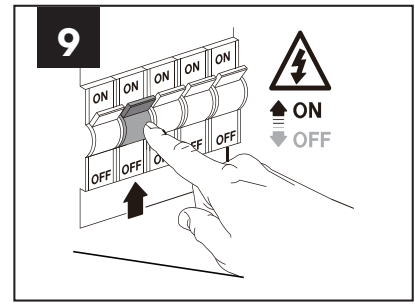
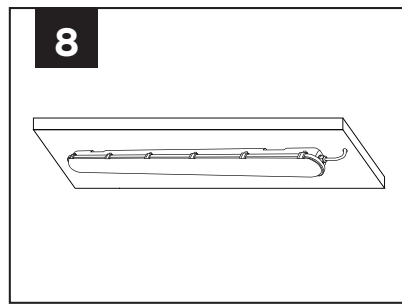
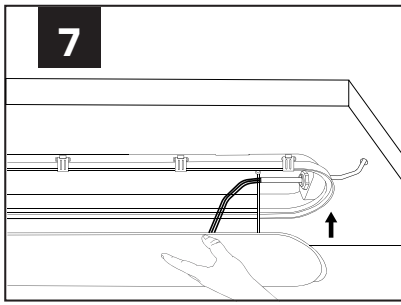
1. Microwave sensor can be installed in any lamp except the one with full metal shell.
2. The detected surface cannot be shielded by metal objects.
3. Make sure the microwave module is completely exposed outside.
4. The detection surface of the sensor module shall be installed facing the detection area.
5. Should be kept away from the driver to avoid interference generation and lamp flashing.
6. Wiring must be strictly in accordance with the wiring diagram to avoid short circuit.

USER NOTES

1. 3M distance is suggested when having a lot sensors in one same room.
2. If the sensor is applied in the room with 5G WiFi router, 3M distance or above is needed.

INSTALLATION INSTRUCTION





x4

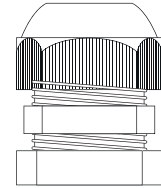
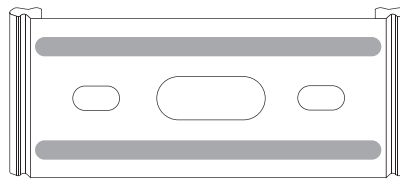
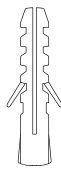
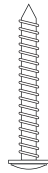
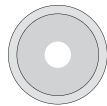
x1

x4

x4

x2

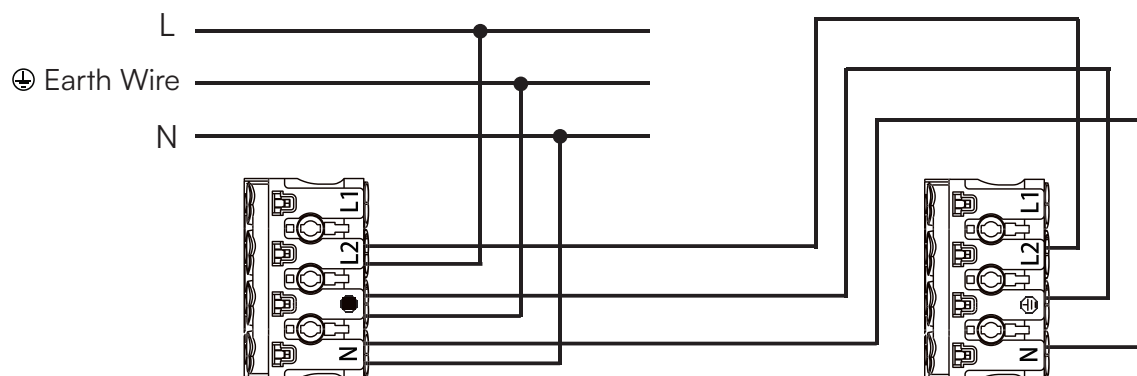
x1



INSTALLATION INSTRUCTIONS

1. Switch OFF the power before starting the installation.
2. Mark and drill the holes on the wall/surface at the correct space for the two surface mounting kits, and fix the kits on the wall/surface.
3. Unfasten securing clips.
4. Gently open the front cover/diffuser from the backside fitting.
5. Click backside fitting to surface mounting kits, Choose suitable Wattage & Colour Temperature by Dip Switch on LED driver.
6. Connect supply leads with terminal brown (L) to brown, blue (N) to blue & greenish-yellow (⊕) to greenish-yellow.
7. Gently put the front cover/diffuser to the backside fitting.
8. Fasten securing clips.
9. Switch ON the power to test the light.

LINKABLE UNITS WIRING DIAGRAM



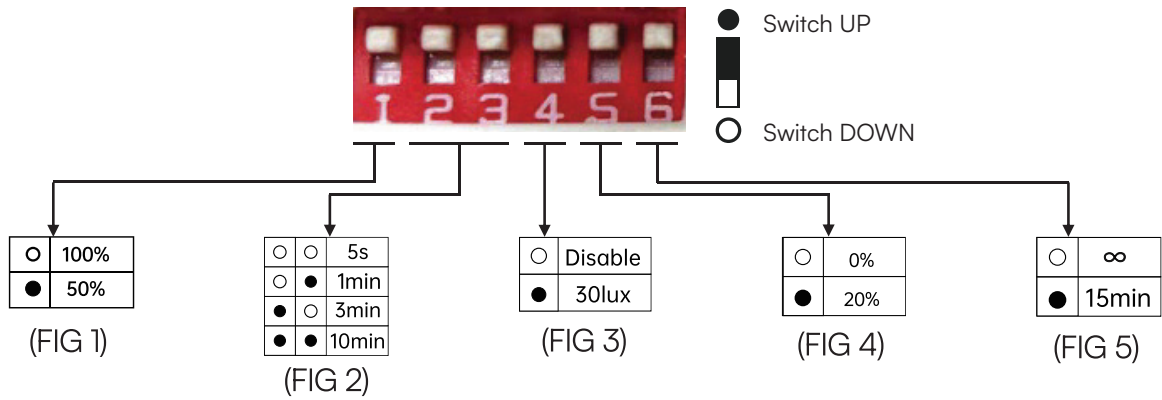
RoHS



UK
CA



SENSOR SETTINGS



DETECTION AREA - It can be adjusted by combining DIP switches for specific application [FIG 1].

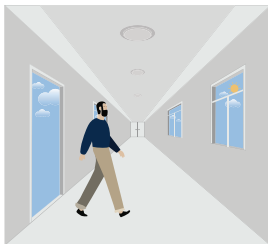
HOLD TIME - Time period during which the light will be ON after the last detection [FIG 2].

DAYLIGHT THRESHOLD - Daylight sensor priors motion sensor. Set Threshold for Specific needs. If disabled, only motion sensor will work [FIG 3].

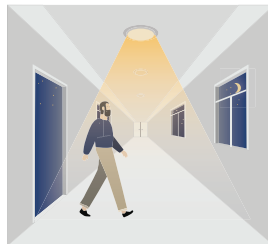
STAND-BY DIMMING LEVEL - The dimming level during which the light is ON during the stand-by Period [FIG 4].

STAND-BY PERIOD - This is the time period during which the light keeps dimming down after the last detection [FIG 5].

AUTOMATICALLY ON/OFF FUNCTION



With sufficient daylight, even when motion detected, light remains OFF

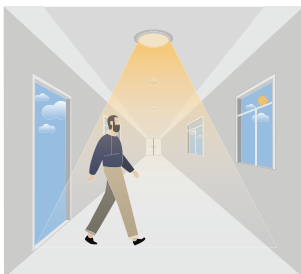


With insufficient daylight, the sensor turns light ON when motion gets detected.

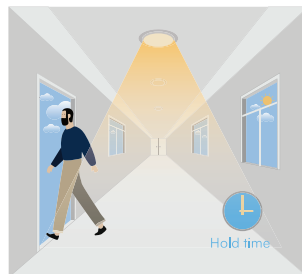


The sensor turns OFF light automatically after the holdtime when there's no motion detected.

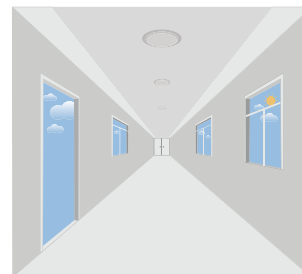
DAYLIGHT DISABLE



The sensor turns light ON when motion gets detected.



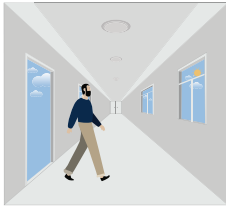
The sensor keeps light ON for holdtime period after motion leaves.



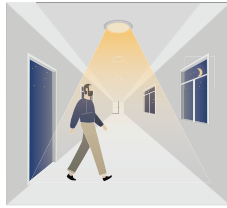
The sensor turns OFF light automatically after the holdtime.

When daylight threshold is preset as "disable", the sensor turns light ON when motion gets detected, and OFF after holdtime.

CORRIDOR FUNCTION, BI-LEVEL DIMMABLE



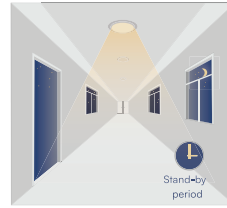
With sufficient daylight, the sensor keeps light OFF even motion gets detected



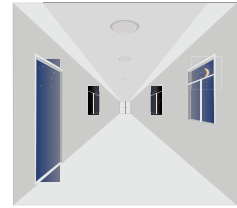
With insufficient daylight, the sensor turns light ON when motion gets detected.



After there's no motion detected, the sensor keeps light ON 100% for holdtime.



After holdtime, sensor dims light to standby dimming level for standby period.



The sensor turns OFF light automatically after the standby period when there's no motion detected.

REMOTE CONTROL (PURCHASE SEPERATELY)

Indicator Light

ON/OFF Motion Sensor ON/OFF

DISTANCE
50%: Near distance about 1-3M
100%: Far distance about 3-6M

TIME UNTIL STANDBY
30Sec/1Min/5Min/10Min

TIME UNTIL STANDBY
The period before light dims down to standby brightness after no motion

KEEP PRESSING (30s)
for 5Sec to enter into Test Mode

Short push On/Off Button to turn on or off the light

MOTION SENSOR
Long push Motion Sensor Button, Indicator light blinks once as detection ON, Blinks twice as detection OFF

BRIGHTNESS
-: Press the button to dim light to lower level.
+: Press the button to dim light to higher level.

STAND-BY BRIGHTNESS
OFF/10%/20%/30%

Stand-by Brightness option before light off. Off button means no standby

DAYLIGHT THRESHOLD
OFF/10LUX/30LUX/50LUX

STANDBY PERIOD
5Min/15Min/30Min/+∞

Keep Pressing (5Min)
for 5Sec to enter Test Mode

REMARK

Indicator light on the remote will blink once every time it successfully delivers command.