

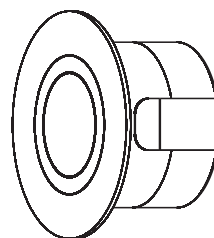
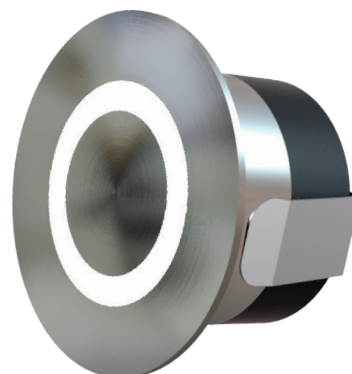
AGLH035SS / **

Halo 1W IP65 350mA Slim Design Marine Grade Stainless Steel 316L Marker Light

PRODUCT FEATURES

- IP65 Stainless Steel Finish
- Unique Anti-Glare Optics
- Suitable For In Ground Use
- Toughened Flush Optics
- 1 Metre Pre-Wired Cable
- 350mA Constant Current (Series Wiring)

HALO



Cutout:
Ø35 mm
Overall Diameter:
Ø44 mm
Overall Depth:
27 mm

TECHNICAL SPECIFICATIONS

Product Code	AGLH035SS/27	AGLH035SS/30	AGLH035SS/40
Useful Luminous Flux (LM)	21LM	24LM	24LM
CCT (Kelvin)	2700K	3000K	4000K
SDCM	<6	<6	<6
CRI	>80	>80	>80
Peak Intensity	5.6cd	6.2cd	6.5cd
Operating Voltage (V)	3V	3V	3V
Max Output Power (W)	1W	1W	1W
Operating Current (A max)	350mA**	350mA**	350mA**
Class	III	III	III
Cut Out	35mm	35mm	35mm
Frame Colour	Stainless Steel	Stainless Steel	Stainless Steel
Switching Cycles	<100,000	<100,000	<100,000
Ingress Protection	IP65	IP65	IP65
Ambient Operating Temperature (°C)	-20°C ~ +50°C	-20°C ~ +50°C	-20°C ~ +50°C
Guarantee	3 years	3 years	3 years
Life Time (L70 B50)	50,000h	50,000h	50,000h
Dimmable	Yes*	Yes*	Yes*



*When used with a suitable ALL LED dimmable driver
**350mA driver required (sold separately)

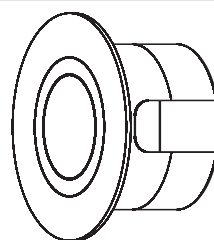
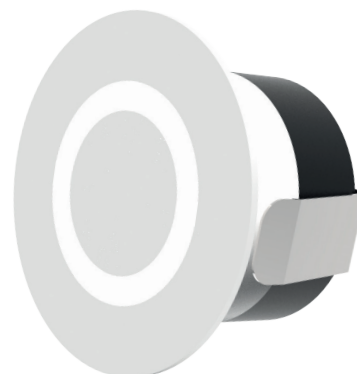
AGLH035WH / **

Halo 1W IP65 Slim Design Polar White Marker Light

PRODUCT FEATURES

- IP65 Polar White Finish
- Unique Anti-Glare Optics
- Suitable For In Ground Use
- Toughened Flush Optics
- 1 Metre Pre-Wired Cable
- 350mA Constant Current (Series Wiring)

HALO



Cutout:
Ø35 mm
Overall Diameter:
Ø44 mm
Overall Depth:
27 mm

TECHNICAL SPECIFICATIONS

Product Code	AGLH035WH/27	AGLH035WH/30	AGLH035WH/40
Useful Luminous Flux (LM)	21LM	24LM	24LM
CCT (Kelvin)	2700K	3000K	4000K
SDCM	<6	<6	<6
CRI	>80	>80	>80
Peak Intensity	5.6cd	6.2cd	6.5cd
Operating Voltage (V)	3V	3V	3V
Max Output Power (W)	1W	1W	1W
Operating Current (A max)	350mA**	350mA**	350mA**
Class	III	III	III
Body Material	Aluminium	Aluminium	Aluminium
Cut Out	35mm	35mm	35mm
Frame Colour	Polar White	Polar White	Polar White
Switching Cycles	<100,000	<100,000	<100,000
Ingress Protection	IP65	IP65	IP65
Ambient Operating Temperature (°C)	-20°C ~ +50°C	-20°C ~ +50°C	-20°C ~ +50°C
Guarantee	3 years	3 years	3 years
Life Time (L70 B50)	50,000h	50,000h	50,000h
Dimmable	Yes*	Yes*	Yes*



*When used with a suitable ALL LED dimmable driver
**350mA driver required (sold separately)