

### EVENTUALLY, YOU MAY WANT TO REPLACE THIS LIGHT FITTING:

When your product comes to the end of its life or you choose to update or upgrade it by replacing it, please do not dispose of it with your normal household waste and please recycle where facilities exist. When you need to dispose of this fitting you can check with your retailer or local authority for suitable options. New regulations require the recycling of Waste from Electrical and Electronic Equipment (European "WEEE Directive" effective August 2005—UK WEEE Regulations effective 2nd January 2007). Environment Agency Registered Producer: WEE/GA0248QZ.



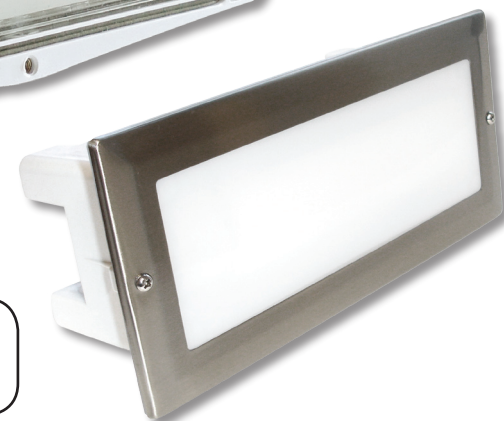
### IF YOU EXPERIENCE PROBLEMS:

If your product is defective or develops a fault, please return it to the place where you bought it. You can call our helpline for advice. The helpline will gladly give advice on any aspect of any Eterna Lighting product but may not be able to give specific instructions regarding individual installations.

**If in doubt, consult a qualified electrician.**



## SAFETY AND INSTALLATION INSTRUCTIONS



**Pack contents:**  
1 x LED bricklight fitting c/w stainless steel frame  
1 x fixing kit (screws & plastic wall plugs)  
2 x cable glands

**Model:**  
**BLLED**

**LED Low Energy Bricklight  
c/w Stainless Steel Frame**

These instructions are provided as a guideline to assist you.

**PLEASE READ THESE INSTRUCTIONS BEFORE USING YOUR NEW FITTING  
PLEASE RETAIN FOR FUTURE REFERENCE**

120404BT



### HELPLINE:

• T: 01933 673 144  
• F: 01933 678 083  
• E: [sales@eterna-lighting.co.uk](mailto:sales@eterna-lighting.co.uk)

Visit our website:

[www.eterna-lighting.co.uk](http://www.eterna-lighting.co.uk)

## General Information, Cleaning & Lamp Replacement:

### READ THIS FIRST:

Check the pack and make sure you have all of the parts listed on the front of this booklet. If not, contact the outlet where you bought this product.

This product must be installed by a competent person in accordance with the current building and IEE wiring regulations.

As the buyer, installer and/or user of this product it is your own responsibility to ensure that this fitting is fit for the purpose for which you have intended it. Eterna Lighting cannot accept any liability for loss, damage or premature failure resulting from inappropriate use.

### If in any doubt, consult a qualified electrician.

Switch off the mains before commencing installation and remove the appropriate circuit fuse or lock off MCB.

This unit is suitable for indoor and outdoor use.

This product is designed for permanent connection to fixed wiring: this must be a suitable circuit (protected with the appropriate RCD and MCB or fuse).

Before making fixing hole(s), check that there are no obstructions hidden beneath the mounting surface such as pipes or cables.

When making connections ensure that the terminals are tightened securely and that no strands of wire protrude. Check that the terminals are tightened onto the bared conductors and not onto any insulation. NB: These units can be looped together.

You are advised at every stage of your installation to double-check any electrical connections you have made. After you have completed your installation there are electrical tests that should be carried out, these tests are specified in the current IEE wiring and building regulations.

### If in doubt, consult a qualified electrician.

### CLEANING:

Disconnect the power and clean the exterior only of this fitting with a moist (not wet) cloth.

The diffuser may be removed and washed in a mild detergent solution; please ensure that it is completely dry before putting it back on your light fitting.

Do not use any chemical or abrasive cleaners.

### LAMP REPLACEMENT:

This luminaire has an LED panel and is maintenance free, no lamp replacement is required.

## Installation:

### INSTALLATION:

Choose the location for your bricklight according to the conditions listed above. Your bricklight is designed to fit into the space occupied by one normal single house brick.

01. Remove the stainless steel trim and diffuser. Take care not to lose any of the "O" ring seals on the screws.
02. Remove the LED panel by pulling the tags which are fitted at each end of panel. See fig. 1 opposite.
03. Offer the base of light fitting into the cavity into which you want it to fit and mark the location of the fixing holes on your mounting surface.
04. Drill and fit wall plugs.
05. Make cable entry hole using an appropriate hole cutter and drill out fixing points in the back of the housing.
06. Fit the cable gland(s) to the case as required. Thread the supply cable through the gland and into the fitting.
07. Make the electrical connections into the terminal block according to the markings:
  - Brown wire to live terminal marked (L)
  - Blue cable to neutral terminal marked (N).
08. Re-fit the LED panel.
09. Tighten the gland nut on the cable gland(s) to ensure they are tight and waterproof.
10. Offer the case into the cavity once more and secure in position using the fixings supplied. If the fixings supplied are not appropriate to your installation select suitable alternatives.
11. Fit the diffuser onto the fitting and secure using the two screws on the longest sides (top and bottom). Ensure that the small rubber "O" ring gaskets are in place.
12. Fit the stainless steel trim; secure it in place using the two remaining screws.
13. Restore the power and switch on.

