

Lamp Current (A): 6.7A
 Ignitor Voltage: 5-6KV
 Luminaire Rating: Enclosed
 Burning Position: Horizontal $\pm 15^\circ$

MBIL S 1500W

Product Number: 22151

Lamp Type: High Wattage Double Ended

Performance Data

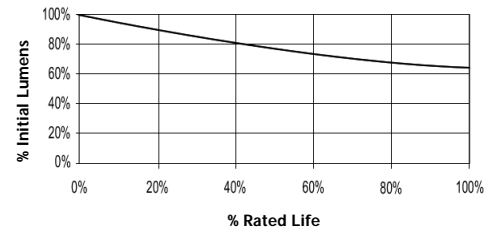
Light Output (Lumens @ 100 hours)	130000H
Lamp Lumens Per Watt	87
Rated Life (Hrs. @ 10 Hr. /Start)	6000H
Correlated Colour Temperature (K)	5200
Chromaticity (CIE - X Y)	340, 360
Colour Rendering Index (CRI) or (Ra)	68
Typical Warm Up Time (Minutes)	2-4
Typical Hot Restart Time (Minutes)	5-10
Burning Position	Horizontal $\pm 15^\circ$



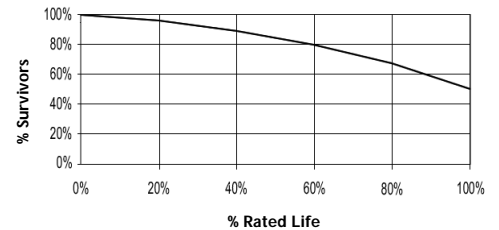
Physical Data / Requirements

Base Designation	Rx7s
Bulb Designation	T20 (T7 USA)
Bulb Diameter (mm)	20
Max. Overall Length (mm)	256
Light Centre Length (mm)	N/A
Effective Arc Length (mm)	166
Max. Base Temperature (°C)	350
Max. Bulb Temperature (°C)	850
Luminaire Type	Enclosed
Socket Pulse Rating (KV)	6
Mercury Content (mg)	

Lumen Maintenance



Lamp Mortality



Lamp Electrical Data / Requirements

IEC Standard	-
Lamp Wattage (W)	1500
Lamp Operating Voltage (V)	250
Lamp Operating Current (Amps)	6.7
Min. Open Circuit Voltage (RMS)	342
Min. - Max. Starting Pulse (Peak V)	5000-6000
Min. Pulse Width at 4500V (microseconds)	1
Min. Pulse Rate Per 1/2 cycle	1
Pulse Position (Electrical Degrees)	60-90, 240-270

Revision: 28/02/2006

Notes:

This Product Specification contains data about typical performance at nominal power. Actual values may depend on ballast and applications. Complies with (CE), Low Voltage (CE), WEEE and RoHS Directives.