

Lamp Current (A): 10.3A  
 Ignitor Voltage: 5-6KV  
 Luminaire Rating: Enclosed  
 Burning Position: Horizontal  $\pm 15^\circ$

**MBIL S 2000W**
**Product Number: 22132**

**Lamp Type:** High Wattage Double Ended

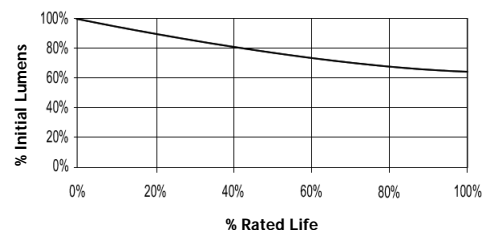
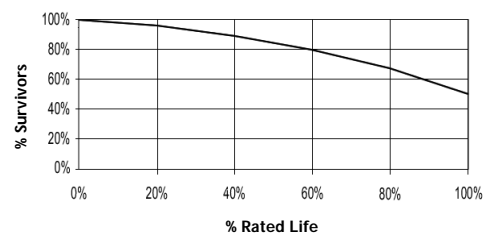
### Performance Data

Light Output (Lumens @ 100 hours)	215000H
Lamp Lumens Per Watt	100
Rated Life (Hrs. @ 10 Hr. /Start)	6000H
Correlated Colour Temperature (K)	5200
Chromaticity (CIE - X Y)	340, 360
Colour Rendering Index (CRI) or (Ra)	68
Typical Warm Up Time (Minutes)	10
Typical Hot Restart Time (Minutes)	15
Burning Position	Horizontal $\pm 15^\circ$



### Physical Data / Requirements

Base Designation	Special-Contact
Bulb Designation	T25
Bulb Diameter (mm)	25
Max. Overall Length (mm)	311
Light Centre Length (mm)	N/A
Effective Arc Length (mm)	188
Max. Base Temperature ( $^\circ\text{C}$ )	350
Max. Bulb Temperature ( $^\circ\text{C}$ )	850
Luminaire Type	Enclosed
Socket Pulse Rating (KV)	6
Mercury Content (mg)	

**Lumen Maintenance**

**Lamp Mortality**


### Lamp Electrical Data / Requirements

IEC Standard	-
Lamp Wattage (W)	2150
Lamp Operating Voltage (V)	230
Lamp Operating Current (Amps)	10.3
Min. Open Circuit Voltage (RMS)	342
Min. - Max. Starting Pulse (Peak V)	5000-6000
Min. Pulse Width at 4500V (microseconds)	1
Min. Pulse Rate Per 1/2 cycle	1
Pulse Position (Electrical Degrees)	60-90, 240-270

**Revision:** 28/02/2006

### Notes:

This Product Specification contains data about typical performance at nominal power. Actual values may depend on ballast and applications. Complies with (CE), Low Voltage (CE), WEEE and RoHS Directives.