

OT 120/220...240/12 P

CV Power supplies 12 V



Areas of application

- Suitable for indoor and outdoor installations
- Ideal for mounting in very tight spaces

Product family benefits

- Versatile scope of application due to output power range of up to 120 W
- Very high efficiency
- IP rating: up to IP67
- High surge protection: up to 3 kV (L-N) / 6 kV (L/N-PE)

Technical data

Electrical data

Nominal input voltage	220...240 V
Mains frequency	50...60 Hz
Input voltage AC	198...264 V ¹⁾
Total harmonic distortion	< 20 %
Power factor λ	0.98/0.95 ²⁾
ECG efficiency	88 % ³⁾
Device power loss	18 W
Protective conductor current	<2.0 mA
Inrush current	40 A ⁴⁾
Max. ECG no. on circuit breaker 10 A (B)	6
Max. ECG no. on circuit breaker 16 A (B)	10
Max. ECG no. on circuit breaker 25 A (B)	-
Surge capability (L-N)	3 kV
Nominal output voltage	12.5 V ⁵⁾
U-OUT (working voltage)	12.5 V
Nominal output power	120 W ⁶⁾
Galvanic isolation	SELV equivalent
Galvanic isolation primary/secondary	3.75 kV ⁷⁾
Surge capability (L/N-Ground)	6 kV

¹⁾ V_{AC} / Permitted voltage range

²⁾ Full load at 230 V/Half load at 230 V

³⁾ At full load and 230 V

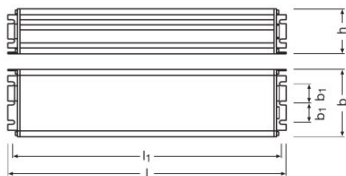
⁴⁾ At 300 μ s

⁵⁾ ± 0.5 V

⁶⁾ Partial load 0...120 W

⁷⁾ SELV-equivalent

Dimensions & weight



Mounting hole spacing, length	241.0 mm
Product weight	1150.00 g
Cable cross-section, input side	1.0 mm ^{2 1)}
Cable cross-section, output side	1.0 mm ^{2 1)}
Wire preparation length, input side	10 mm
Wire preparation length, output side	10 mm
Cable/wire length, input side	450 mm
Cable/wire length, output side	450 mm
Mounting hole spacing, width	15.0 mm ²⁾
Length	250.0 mm
Width	60.0 mm
Height	39.0 mm

¹⁾ Flexible

²⁾ Side mounting

Colors & materials

Casing material	Metal
-----------------	-------

Temperatures & operating conditions

Ambient temperature range	-25...+55 °C
Maximum temperature at tc test point	80 °C
Max.housing temperature in case of fault	100 °C
Temperature range at storage	-40...+85 °C
Permitted rel. humidity during operation	5...85 % ¹⁾

¹⁾ Non-condensing

Lifespan

ECG lifetime	50000 h ¹⁾
--------------	-----------------------

Product datasheet

¹⁾ At $T_{case} = 70^{\circ}C$ at T_c point / 10% failure rate

Additional product data

Encapsulated	No
--------------	----

Capabilities

Dimmable	No ¹⁾
Dimming interface	Not dimmable
Overheating protection	Automatic reversible
Overload protection	Automatic reversible
Short-circuit protection	Automatic reversible
No-load proof	Yes
Suitable for fixtures with prot. class	I
Number of channels	1

¹⁾ With OPTOTRONIC dimmers







Certificates & standards

Approval marks – approval	CE / ENEC 18 / CB / CCC / RCM / EAC / BIS
Standards	Acc. to IEC 61347-1/Acc. to IEC 61347-2-13/Acc. to IEC 62384/Acc. to CISPR 15/Acc. to IEC 61000-3-2/Acc. to IEC 61000-3-3/Acc. to IEC 61547
Protection class	I
Type of protection	IP67

Logistical data

Commodity code	850440829000
----------------	--------------

Download Data

File	
	Product Datasheet 340366_OPTOTRONIC OT 120220-24012 P
	Brochures OPTOTRONIC constant-voltage LED power supplies and controls (EN)
	Certificates 545902_ENEC certificate OT 120220-24012 P
	Certificates 545903_ENEC certificate-R OT 120220-24012 P
	Declarations of conformity 728507_EU Declaration OT
	Declarations of conformity EU Declaration of Conformity 3540579

Product datasheet



Installation guide
343881_Instruction Sheet_OT 120220-24012 P

Logistical Data

Product code	Product description	Packaging unit (Pieces/Unit)	Dimensions (length x width x height)	Volume	Gross weight
4008321790835	OT 120/220...240/12 P	Shipping carton box 10	589 mm x 155 mm x 399 mm	36.43 dm ³	13000.00 g

The mentioned product code describes the smallest quantity unit which can be ordered. One shipping unit can contain one or more single products. When placing an order, for the quantity please enter single or multiples of a shipping unit.

Disclaimer

Subject to change without notice. Errors and omission excepted. Always make sure to use the most recent release.