



360° TowerLight

3M TRIPOD



This robust, innovative, 110V floodlight features a high lumen output of 84,000 lm and 360° light distribution, also can be linked to two additional TowerLight's for extra coverage, making it an incredibly efficient solution for site lighting.

Features

- High light output, ideal for large spaces
- Provided with IP67 locking plug for interlinking two additional towerlights for extra coverage
- 300W (3 Head) version available as special order
- Average 20 lux over 2800 m² based on a deployed height of 3m
- Adjustable for both 180° and 360° degree light distribution
- High brightness of 84000 lm
- Convenient carry bag
- Tripod adjustable to 3 metres
- 10m rubber power cable
- Supplied with inline dimmer and on off switch as standard
- Integrated photocell with on/off switch for automatic operation



Specification

Material:	Aluminium, PC
Colour Temperature:	6500K
Colour Finish:	Yellow
CRI	Ra>80
IP Rating:	IP65
IK Rating:	IK10
Working Temperature:	-20°C to 50°C
Tripod Height	3 Metres
Power Cable:	10m Rubber Cable
Lamphead Lumens:	84,000 lm
Guarantee:	3 Years

Product Code	Description	Wattage	Lumen output	Net Weight	Barcodes
TWL360-600	360° LED Floodlight	600W	84000 lm	14.5Kg	5055807626354
TWL360-3M-TRIPOD	3m Tripod	-	-	11Kg	5055807626361
TWL360-BB	Set of 3pcs Empty Ballast Bags	-	-	0.4Kg	5055807626392
EXL-5M-IP67	5m IP67 Extension c/w IP67 16A Plug & Socket	-	-	1Kg	5055807626408



Image 1 - 360° TowerLight Folded



3 Head Version - Available for special order



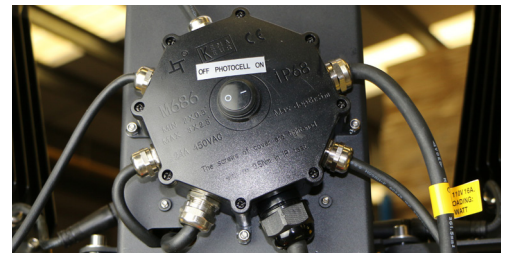
Image 2 - 360° TowerLight Unfolded



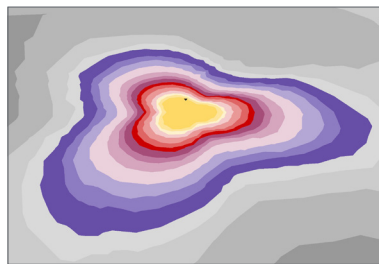
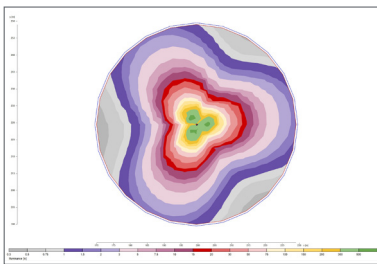
Spirit Level



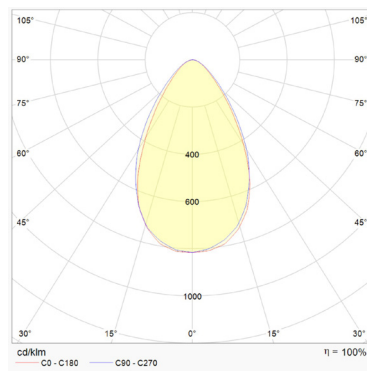
Dimmer Control



Integrated Photocell



Light Distribution Curve (Per head)



ENERGY
Red Arrow
 TWL360-600

A
 B
 C
 D
 E
 F
 G

600
 kWh/1000h

When angled (as per Image 1), results of 20 lux average over 2800m², tripod deployed at a 3m height.
 The above is subject to floodlight angle/direction and height of tripod.

UK CA, CE, ENEC, LED, 230V, QR code