

INSTALLATION INSTRUCTION

LED EMERGENCY TWIN SPOT

TECHNICAL DATA

Model	VT-526
WATTS	6W(3W x 2)
NO. OF LED	2x6 SMD LEDs
LUMENS	300LM
BATTERY TYPE	Ni-Cd 3.6V, 3500mAh
EMERGENCY OPERATION TIME	>3 Hours (Non-Maintained)
BATTERY DISCHARGE CURRENT	400-1500mA
BATTERY CHARGING CURRENT	150-250mA
RECHARGING	24H (Initial charge 36H)
INDICATOR	GREEN LIGHT INDICATOR
DIMENSION	301x90x280mm
INPUT POWER	AC:220-240V, 50/60Hz
BODY TYPE	100% PC
LAMP TYPE	WALL MOUNTED



INTRODUCTION & WARRANTY


Thank you for selecting and buying V-TAC product. V-TAC will serve you the best. Please read these instructions carefully before starting the installation and keep this manual handy for future reference. If you have any other query, please contact our dealer or local vendor from whom you have purchased the product. They are trained and ready to serve you at the best. The warranty is valid for 3 years from the date of purchase. The warranty does not apply to damage caused by incorrect installation or abnormal wear and tear. The company gives no warranty against damage to any surface due to incorrect removal and installation of the product. This product is warranted for manufacturing defects only.



IP65
RATING



WARNING:

- This product must be disconnected from the circuit if subjected to any high voltage or insulation resistance testing. Irreparable damage will occur if this instruction is not followed
- Recommended routine test procedure in accordance with BS5266
- Daily check – check that the status GREEN LED indicator is illuminated
- Monthly functional test – simulate a mains supply failure for approx. 30 secs by operation of key switch or switching off a circuit breaker. Ensure normal supply is restored after test and the indicator status LED is illuminated
- Twice yearly conduct a one hour duration test - simulate a mains supply failure for one hour continuous test by operation of key switch or switching off circuit breaker. Ensure normal supply is restored after test and the indicator status LED is illuminated
- Annual full three hour duration test - conduct a three hour continuous duration test. Simulate a mains supply failure for three hour continuous test by operation of key switch or switching off circuit breaker. Ensure normal supply is restored after test and the indicator status LED is illuminated
- Please make sure to turn off the power before starting the installation.
- The light source of this luminaire is not replaceable; when the light source reaches its end of life the whole luminaire shall be replaced.
- Replace any cracked protective shield. 
- Installation should only be done by a certified electrician.
- Proper grounding should be ensured throughout the installation.
- Terminal block is not included

SAFETY

- Before installation or maintenance, ensure that the mains supply to the luminaire is switched off and the circuit supply fuses are removed or circuit breaker switched off.
- It is recommended that a qualified electrician is consulted or used for the installation of this luminaire and installed to the current edition of the IEE
- Wiring Regulations and relevant Building Regulations.
- Check that the total load on the circuit including when this luminaire is fitted does not exceed the rating of the circuit cable, fuse or circuit breaker.
- The luminaire must be earthed. It belongs to Class I.
- This unit is NON- MAINTAINED only and operates on mains power failure only.



This marking indicates that this product should not be disposed of with other household wastes.



Caution, risk of electric shock.

EMERGENCY LUMINAIRE DESIGNATION

X	0	***	180
---	---	-----	-----

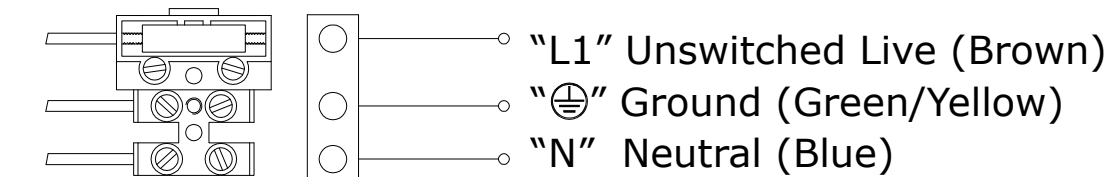
000609

INSTALLATION:

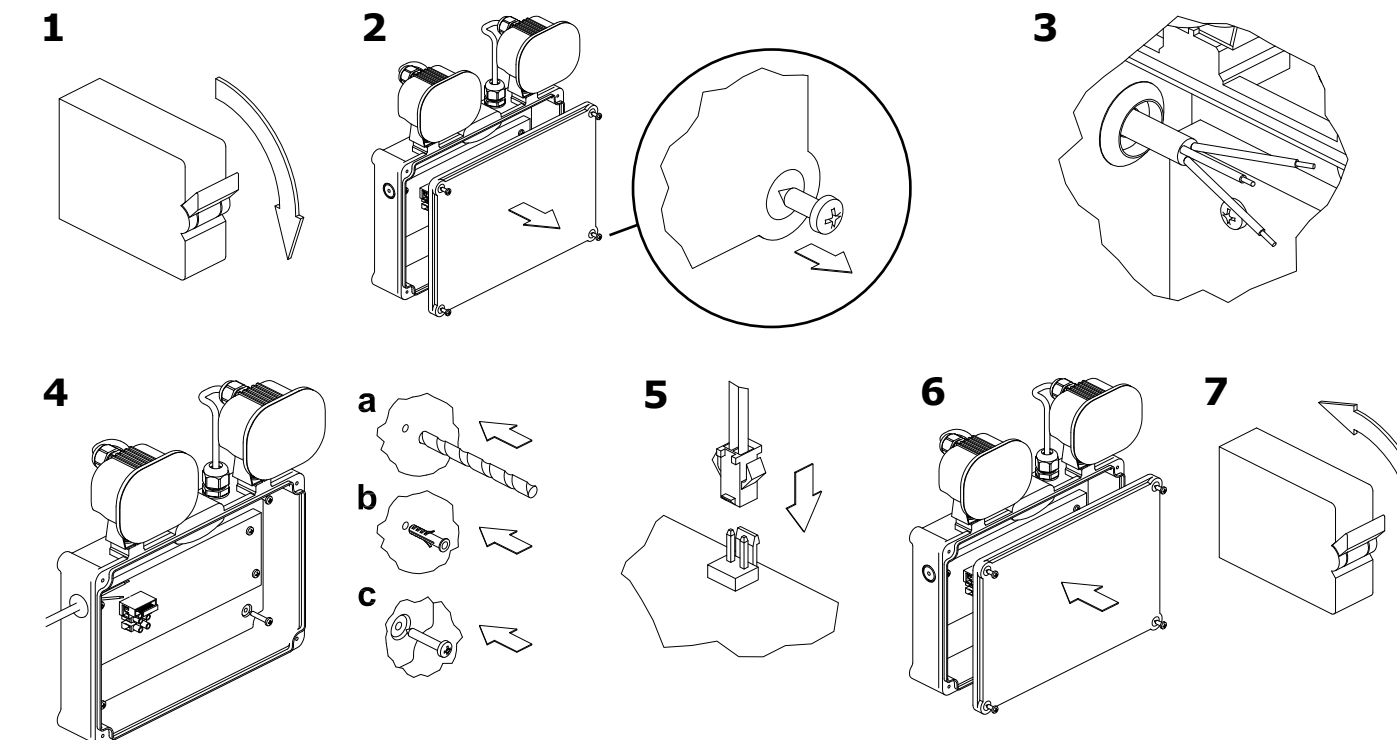
- Switch off the power before starting the installation.
 - Remove the front cover by removing the 4 fixing screws at each corner.
 - Select a suitable cable entry point in the body of the luminaire and feed the mains cable through the grommet/-cable gland to prevent damage to the cable.
 - 4x fixing blind holes are located in the back of the fitting in the chosen position drill the fixing holes ensuring that the fixing holes do not interfere with any hidden gas/water pipes or electrical cables.
 - (a) Drill holes on the wall.
 - (b) Fit rawl plugs inside the holes.
 - (c) Position and fix the luminaire body to a suitable solid surface and fix with screws.
- Note: Do not Install his fitting on newly plastered areas.

- Choose a suitable cable entry; a 20mm knockout is provided on the back of the unit. Ensure to use a suitable cable gland to maintain the units IP rating
- Ensure that the luminaire has a continuous power supply to the Un-Switched Live. Terminate the mains cable into the terminal block mounted on the PCB ensuring that the correct polarity is observed and the luminaire is fully earthed. Ensure all conductors are fully sleeved and insulated
- Connect the battery plug to the socket on the circuit board observing correct polarity THIS SHOULD ONLY BE DONE WHEN A RELIABLE MAINS SUPPLY IS AVAILABLE.
- Place back the front cover and fix with 4 screws on the corner.
- Switch on the power

WIRING DIAGRAM



INSTALLATION

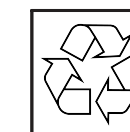


MAINTENANCE

Once the luminaire no longer meets the rated emergency operation the batteries must be replaced after a maximum of 4 years in service. Repairs should only be carried out by a qualified person. Please recycle disposal of replaced components where facilities exist. Special care should be taken if it's required to open the fitting as the fitting may still be "live" even though the mains supply has been isolated. In these circumstances immediately disconnect the battery supply. Servicing and cleaning should only be carried out after the fitting has been made electrically safe. Cleaning of luminaires should be carried out at regular intervals not only to ensure good optical performance but also ensure that dirt does not accumulate to such an extent as to impair the electrical or thermal safety of the fitting.

GENERAL INSTRUCTIONS

MONTH	TEST	FIRST YEAR		SECOND YEAR		THIRD YEAR		FOURTH YEAR		FIFTH YEAR	
		SIGNED	DATE	SIGNED	DATE	SIGNED	DATE	SIGNED	DATE	SIGNED	DATE
1	FUNCTIONAL										
2	FUNCTIONAL										
3	FUNCTIONAL										
4	FUNCTIONAL										
5	FUNCTIONAL										
6	1 HOUR										
7	FUNCTIONAL										
8	FUNCTIONAL										
9	FUNCTIONAL										
10	FUNCTIONAL										
11	FUNCTIONAL										
12	3 HOUR										



IN CASE OF ANY QUERY/ISSUE WITH THE PRODUCT, PLEASE REACH OUT TO US AT
SUPPORT@VTACEXPORTS.COM V-TAC HOUSE, KELPATRICK ROAD, SLOUGH, BERKSHIRE, SL1 6BW, UK.