

Lamp Current (A): 4.1A

Ignitor Voltage: 1-1.5KV

Luminaire Rating: Enclosed

Burning Position: Universal

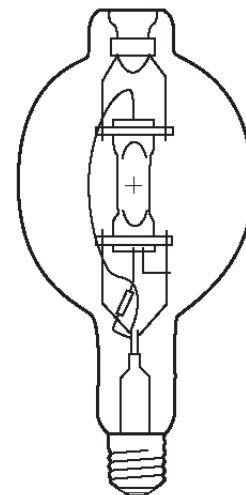
HIE 1000W/C/U/4K

Product Number: 12175

Lamp Type: CWA Metal Halide

Performance Data

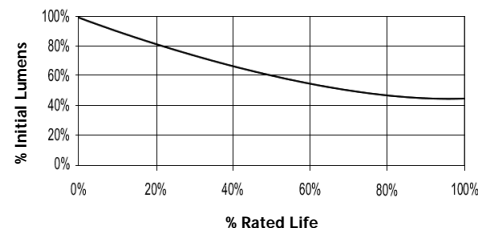
| | |
|--------------------------------------|------------------|
| Light Output (Lumens @ 100 hours) | 105000V / 94500H |
| Lamp Lumens Per Watt | 105 |
| Rated Life (Hrs. @ 10 Hr. /Start) | 12000V / 9000H |
| Correlated Colour Temperature (K) | 3700 |
| Chromaticity (CIE - X Y) | 395, 390 |
| Colour Rendering Index (CRI) or (Ra) | 70 |
| Typical Warm Up Time (Minutes) | 3-5 |
| Typical Hot Restart Time (Minutes) | 10-15 |
| Burning Position | Universal |



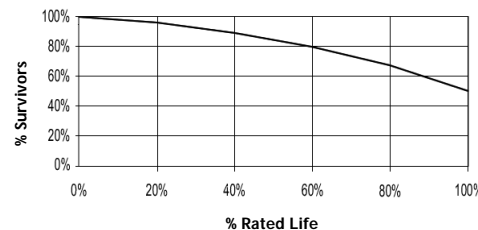
Physical Data / Requirements

| | |
|----------------------------|----------|
| Base Designation | E40 |
| Bulb Designation | BT180 |
| Bulb Diameter (mm) | 180 |
| Max. Overall Length (mm) | 395 |
| Light Centre Length (mm) | 245 |
| Effective Arc Length (mm) | N/A |
| Max. Base Temperature (°C) | 250 |
| Max. Bulb Temperature (°C) | 430 |
| Luminaire Type | Enclosed |
| Socket Pulse Rating (KV) | - |
| Mercury Content (mg) | - |

Lumen Maintenance



Lamp Mortality



Lamp Electrical Data / Requirements

| | |
|---|----------------|
| IEC Standard | - |
| Lamp Wattage (W) | 1000 |
| Lamp Operating Voltage (V) | 263 |
| Lamp Operating Current (Amps) | 4.1 |
| Min. Open Circuit Voltage (RMS) | 380 |
| Min. - Max. Starting Pulse (Peak V) | 1000-1500 |
| Min. Pulse Width at 900V (microseconds) | 1 |
| Min. Pulse Rate Per ½ cycle | 1 |
| Pulse Position (Electrical Degrees) | 60-90, 240-270 |

Revision: 28/02/2006

Notes:

This Product Specification contains data about typical performance at nominal power. Actual values may depend on ballast and applications. Complies with (CE), Low Voltage (CE), WEEE and RoHS Directives.