

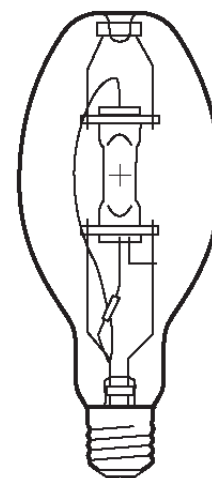
Lamp Current (A): 3.2A
 Ignitor Voltage (Min.): 0.6KV
 Luminaire Rating: Enclosed
 Burning Position: Universal

HIE 400W/C/U/EURO/4K
Product Number: 88787

Lamp Type: Euro Metal Halide

Performance Data

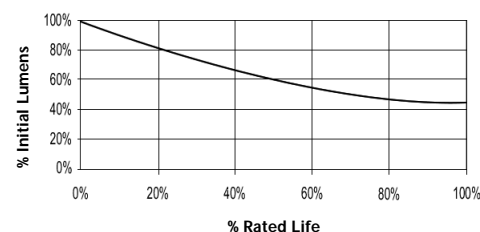
Light Output (Lumens @ 100 hours)	34000V / 30600H
Lamp Lumens Per Watt	85
Rated Life (Hrs. @ 10 Hr. /Start)	15000V / 11250H
Correlated Colour Temperature (K)	3700
Chromaticity (CIE - X Y)	395, 390
Colour Rendering Index (CRI) or (Ra)	70
Typical Warm Up Time (Minutes)	3-5
Typical Hot Restart Time (Minutes)	8-12
Burning Position	Universal



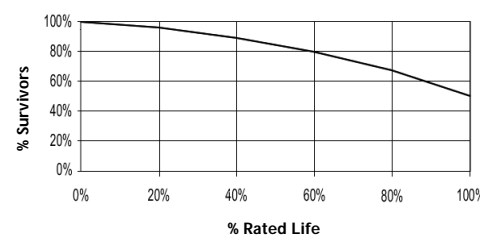
Physical Data / Requirements

Base Designation	E40
Bulb Designation	E120
Bulb Diameter (mm)	120
Max. Overall Length (mm)	296
Light Centre Length (mm)	182
Effective Arc Length (mm)	N/A
Max. Base Temperature (°C)	250
Max. Bulb Temperature (°C)	400
Luminaire Type	Enclosed
Socket Pulse Rating (KV)	-
Mercury Content (mg)	-

Lumen Maintenance



Lamp Mortality



Lamp Electrical Data / Requirements

IEC Standard	-
Lamp Wattage (W)	400
Lamp Operating Voltage (V)	135
Lamp Operating Current (Amps)	3.2
Min. Open Circuit Voltage (RMS)	198
Min. Starting Pulse (Peak V)	600
Min. Pulse Width at 540V (microseconds)	260
Min. Pulse Rate Per ½ cycle	1
Pulse Position (Electrical Degrees)	60-90

Revision: 28/02/2006

Notes:

This Product Specification contains data about typical performance at nominal power. Actual values may depend on ballast and applications. Complies with (CE), Low Voltage (CE), WEEE and RoHS Directives.

This lamp is also compatible with a 3.0-4.5kV ignitor