

Lamp Current (A): 3A
 Ignitor Voltage: 3.5-5KV
 Luminaire Rating: Enclosed
 Burning Position: Horizontal±45°

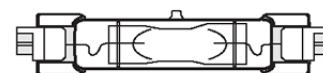
MH-DE 250W/UVS/3K/Fc2

Product Number: 84727

Lamp Type: Double Ended Fc2

Performance Data

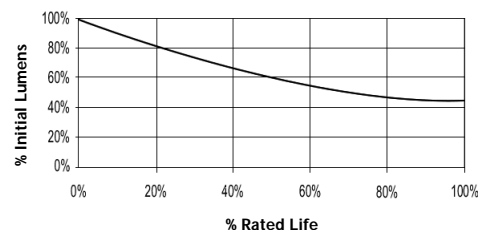
Light Output (Lumens @ 100 hours)	20000
Lamp Lumens Per Watt	80
Rated Life (Hrs. @ 10 Hr. /Start)	10000
Correlated Colour Temperature (K)	3000
Chromaticity (CIE - X Y)	435, 400
Colour Rendering Index (CRI) or (Ra)	70
Typical Warm Up Time (Minutes)	2-4
Typical Hot Restart Time (Minutes)	5-10
Burning Position	Horizontal±45°



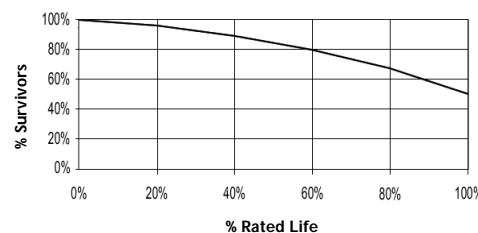
Physical Data / Requirements

Base Designation	Fc2
Bulb Designation	T25
Bulb Diameter (mm)	25
Insertion Length (mm)	163
Contact to Contact Length (mm)	-
Effective Arc Length (mm)	27
Max. Base Temperature (°C)	300
Max. Bulb Temperature (°C)	650
Luminaire Type	Enclosed
Socket Pulse Rating (KV)	5
Mercury Content (mg)	

Lumen Maintenance



Lamp Mortality



Lamp Electrical Data / Requirements

IEC Standard	61167
Lamp Wattage (W)	250
Lamp Operating Voltage (V)	100
Lamp Operating Current (Amps)	3
Min. Open Circuit Voltage (RMS)	198
Min. - Max. Starting Pulse (Peak V)	3500-5000
Min. Pulse Width at 3200V (microseconds)	1
Min. Pulse Rate Per ½ cycle	1
Pulse Position (Electrical Degrees)	60-90, 240-270

Revision: 28/02/2006

Notes:

This Product Specification contains data about typical performance at nominal power. Actual values may depend on ballast and applications. Complies with (CE), Low Voltage (CE), WEEE and RoHS Directives.