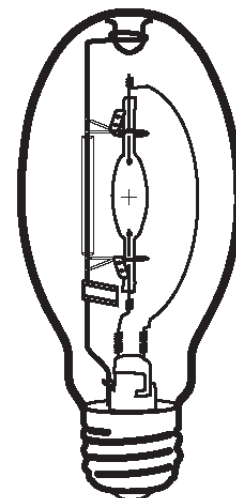


HIE 250W/C/H75/PS/737
Product Number: 91947
Lamp Type: Uni-Form Pulse Start

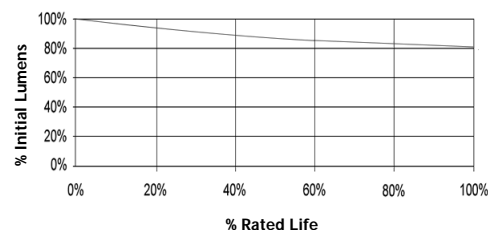
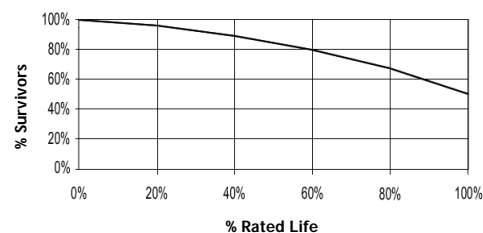
Performance Data

Light Output (Lumens @ 100 hours)	20000
Lamp Lumens Per Watt	84
Rated Life (Hrs. @ 10 Hr. /Start)	20000
Correlated Colour Temperature (K)	3700
Chromaticity (CIE - X Y)	395, 390
Colour Rendering Index (CRI) or (Ra)	70
Typical Warm Up Time (Minutes)	2-3
Typical Hot Restart Time (Minutes)	3-5
Burning Position	Horizontal±75°



Physical Data / Requirements

Base Designation	E40
Bulb Designation	E90
Bulb Diameter (mm)	90
Max. Overall Length (mm)	215
Light Centre Length (mm)	131
Effective Arc Length (mm)	N/A
Max. Base Temperature (°C)	250
Max. Bulb Temperature (°C)	400
Luminaire Type	Enclosed
Socket Pulse Rating (KV)	4.5
Mercury Content (mg)	

Lumen Maintenance

Lamp Mortality


Lamp Electrical Data / Requirements

IEC Standard	-
Lamp Wattage (W)	250
Lamp Operating Voltage (V)	133
Lamp Operating Current (Amps)	2.1
Min. Open Circuit Voltage (RMS)	198
Min. - Max. Starting Pulse (Peak V)	3000-4500
Min. Pulse Width at 2700V (microseconds)	1
Min. Pulse Rate Per ½ cycle	1
Pulse Position (Electrical Degrees)	60-90, 240-270

Revision: 11.03.2011

Notes:

This Product Specification contains data about typical performance at nominal power. Actual values may depend on ballast and applications. Complies with (CE), Low Voltage (CE), WEEE and RoHS Directives.

Rated Life is based on operation with Ventronic® or specifically approved electronic ballasts.

Minimum Operating Temperature: -40°C