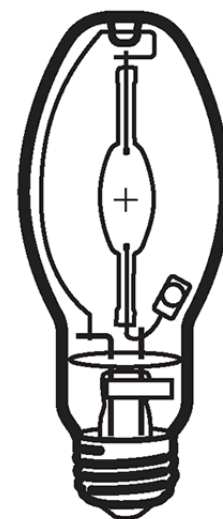


**HIE 50W/U/LU/740**
**Product Number: 67331**
**Lamp Type:** White-Lux Plus

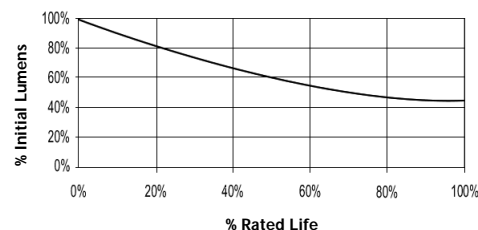
### Performance Data

Light Output (Lumens @ 100 hours)	3400V / 3100H
Lamp Lumens Per Watt	68
Rated Life (Hrs. @ 10 Hr. /Start)	10000V / 7500H
Correlated Colour Temperature (K)	4000
Chromaticity (CIE - X Y)	385, 390
Colour Rendering Index (CRI) or (Ra)	68
Typical Warm Up Time (Minutes)	1-2
Typical Hot Restart Time (Minutes)	1-2
Burning Position	Universal



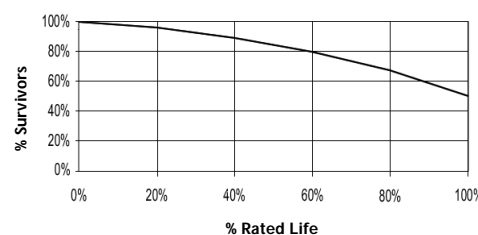
### Physical Data / Requirements

Base Designation	E27
Bulb Designation	E54
Bulb Diameter (mm)	54
Max. Overall Length (mm)	141
Light Centre Length (mm)	89
Effective Arc Length (mm)	6.8
Max. Base Temperature (°C)	210
Max. Bulb Temperature (°C)	400
Luminaire Type	Enclosed
Socket Pulse Rating (KV)	4.5
Mercury Content (mg)	

**Lumen Maintenance**


### Lamp Electrical Data / Requirements

IEC Standard	-
Lamp Wattage (W)	50
Lamp Operating Voltage (V)	85
Lamp Operating Current (Amps)	0.68
Min. Open Circuit Voltage (RMS)	198
Min. - Max. Starting Pulse (Peak V)	3000-4500
Min. Pulse Width at 2700V (microseconds)	1
Min. Pulse Rate Per ½ cycle	1
Pulse Position (Electrical Degrees)	60-90, 240-270

**Lamp Mortality**

**Revision:** 28/02/2006

### Notes:

This Product Specification contains data about typical performance at nominal power. Actual values may depend on ballast and applications. Complies with (CE), Low Voltage (CE), WEEE and RoHS Directives.