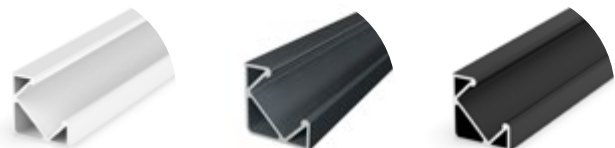


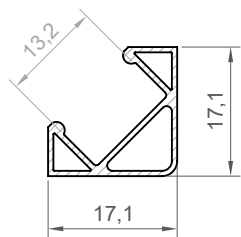


# P3-1



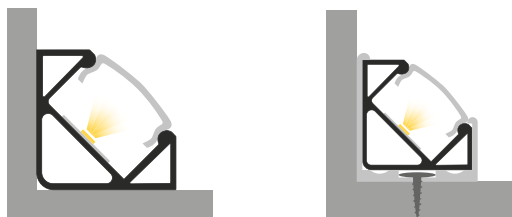
<b>PROFILE TYPE</b>	<b>WIDTH OF LED TAPE</b>
corner	up to 12 mm
<b>VERSIONS</b>	<b>LENGTH</b>
silver anodised painted in white painted in black anthracite grey raw aluminium others - on demand	1000 mm 2000 mm 3000 mm 4000-6000 mm (on demand)

## TECHNICAL DRAWING WITH DIMENSIONS



1:1

## INSTALLATION INSTRUCTIONS



## ACCESSORIES

### DIFFUSERS (CLICK-IN TYPE)



C1 transparent    C1 opal    C1 black&white    C4 opal



C13 transparent    C13 opal    C13 black&white

### END CAPS



plastic end caps P3-1+C1/C4



plastic end caps P3-1+C13

## OTHER ACCESSORIES



metal clip



plastic clip



TESA adhesive tape

# P3-1

