

HID ignitors for series systems

SN 58 220-240V 50/60Hz

HID ignitors for series systems

Product data

• General Characteristics

Rated Number of Lamps	1 piece
Rated Ballast-Lamp Power	35-400
Rated Lamptype	SON/CDM/MH/HPI
Application code	58
Line Voltage	220-240 V
Line Frequency	50/60 Hz
Housing	SNI-85

• Operating Characteristics

Ignition type	Semi-Parallel
Mains voltage safety (AC)	-10%/+10%
Mains voltage performance (AC)	-8%/+6%
Number of ignition pulses	2 x
Power losses gear	0.5 W
Response voltage	190 V
Ignition Voltage	5.00 (max) kV

• Wiring Characteristics

Cable-Cap wires device/lamp	2 nF
Connector type	Screw
Striplength	6.0 mm
Wcs Ballast contacts	0.70-2.50 mm2

• Temperature Characteristics

T-case maximum	90 (max) C
----------------	------------

T-ambient	-20 (min), 85 (max) C
T-storage	-25 (min), 80 (max) C

• Product Dimensions

Length A1	84.5 mm
Fixing Hole Distance	65.0 mm
Length A2	
Width B1	41.0 mm
Height C1	38.0 mm
Fixing Hole Diameter D1	4.3 mm

• Approval & Application Chars

CE marking	Yes
ENEC certificate	Yes

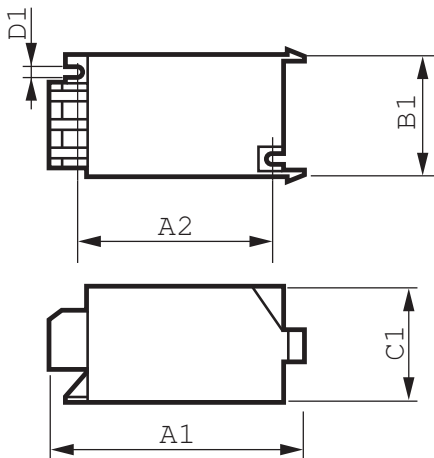
• Product Data

Order code	915566 30
Full product code	871150091556630
Full product name	SN 58 220-240V 50/60Hz
Order product name	SN 58 220-240V 50/60Hz
Pieces per pack	1
Packing configuration	48
Packs per outerbox	48
Bar code on pack - EAN1	8711500915566
Bar code on outerbox - EAN3	8711500907554
Logistic code(s) - 12NC	913619579966
Net weight per piece	0.040 kg

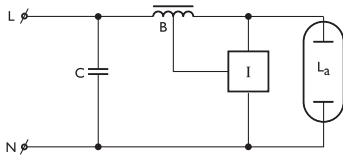
PHILIPS

sense and simplicity

Dimensional drawing



Product	A1 (Norm)	A2 (Norm)	B1 (Norm)	C1 (Norm)	D1 (Norm)
SN 58 220-240V 50/60Hz	84.5	65.0	41.0	38.0	4.3



© 2012 Koninklijke Philips Electronics N.V.
All rights reserved.

Specifications are subject to change without notice. Trademarks are the property of Koninklijke Philips Electronics N.V. or their respective owners.

www.philips.com/lighting

2012, April 11
data subject to change