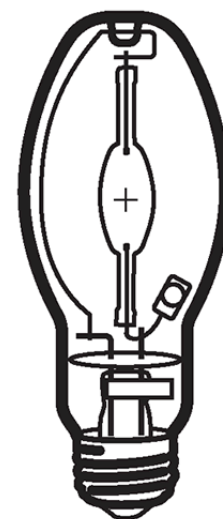


HIE 150W/C/U/LU/737
Product Number: 40563
Lamp Type: White-Lux Plus

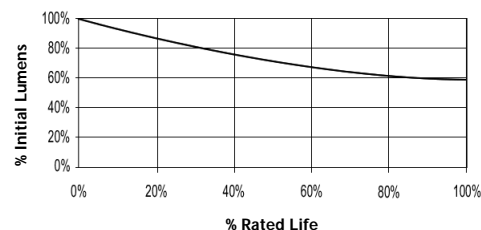
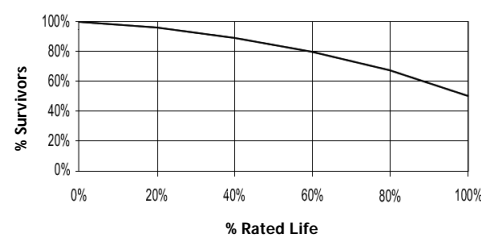
Performance Data

Light Output (Lumens @ 100 hours)	13300V / 12000H
Lamp Lumens Per Watt	89
Rated Life (Hrs. @ 10 Hr. /Start)	15000V / 11250H
Correlated Colour Temperature (K)	3700
Chromaticity (CIE - X Y)	395, 390
Colour Rendering Index (CRI) or (Ra)	70
Typical Warm Up Time (Minutes)	1-2
Typical Hot Restart Time (Minutes)	2-4
Burning Position	Universal



Physical Data / Requirements

Base Designation	E27
Bulb Designation	E54
Bulb Diameter (mm)	54
Max. Overall Length (mm)	141
Light Centre Length (mm)	89
Effective Arc Length (mm)	N/A
Max. Base Temperature (°C)	210
Max. Bulb Temperature (°C)	400
Luminaire Type	Enclosed
Socket Pulse Rating (KV)	4.5
Mercury Content (mg)	

Lumen Maintenance

Lamp Mortality


Lamp Electrical Data / Requirements

IEC Standard	-
Lamp Wattage (W)	150
Lamp Operating Voltage (V)	95
Lamp Operating Current (Amps)	1.8
Min. Open Circuit Voltage (RMS)	198
Min. - Max. Starting Pulse (Peak V)	3000-4500
Min. Pulse Width at 2700V (microseconds)	1
Min. Pulse Rate Per ½ cycle	1
Pulse Position (Electrical Degrees)	60-90, 240-270

Revision: 28/02/2006

Notes:

This Product Specification contains data about typical performance at nominal power. Actual values may depend on ballast and applications. Complies with (CE), Low Voltage (CE), WEEE and RoHS Directives.